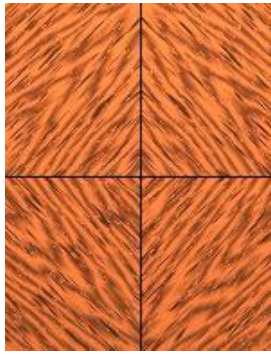


Veneer Terms

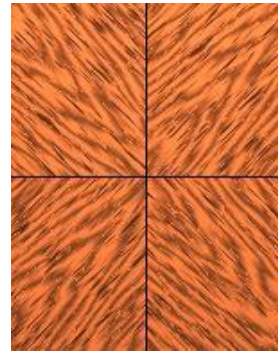
Veneering Patterns



Herringbone



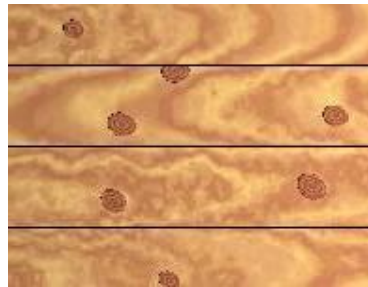
Diamond



Reverse
Diamond



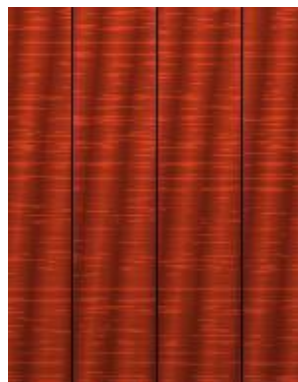
Burr



Random



Inverted
Slip matched



Running



Book matched

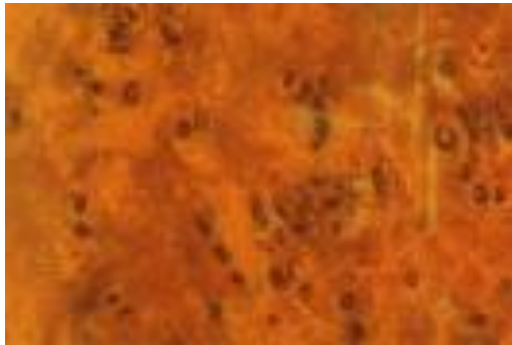
Veneer Terms :

- Marquetry : Creating patterns or pictures using different veneers.
- Balancing Veneer : Back of groundwork is veneered also to prevent warpage.
- Rotary Veneer : Veneer peeled from the log in long continuous sheets. Mainly used for backing veneer. (note : Birds Eye Maple is a choice veneer)
- Stripe Veneer : Also called Ribbon Figure obtained by cutting timber with interlocking Grain.
- Inlay : Narrow strips of wood inlaid into the ground work.
- Grain : The direction in which the wood fibres are going.

- Birdseye : Figure on the surface of the veneer similar to small birds eyes.
- Flitch :A section of a Log after initial conversion also refers to a bundle of Veneers cut from a single flitch.
- Cross band :When the grain direction runs at right angles to panel edges.
- Blue Stain :The reaction that certain timber has with Iron. Eg. the Tannic acid in Oak.
- Bleed Through : Glue forced through the grain of the veneer. (Show through)
- Oyster Veneer :Veneers cut at 45° across the branch of certain trees, Walnut.
- Boulle Work: Charles Andrea Buhl used other materials besides wood veneer to create his Marquetry work.

Burrs / Burls

- Burrs are growths on the sides of trees. Veneers are obtained by slicing through them.



Oyster Shell Veneers

- Thin Slices of veneer about 1.5mm are cut across the branch of Trees such as Lignum Vitae, Olive, Laburnum, Yew and Walnut.
- The result is an Oyster – shell effect. The Oysters are stacked with wooden spacers between and weighted down or the short lengths of branches are buried in dry sand.
- The Seasoning must be very gradual to avoid splitting. Oysters can be either trimmed Square and matched or laid at random.
- This Table Top has American Burr Walnut inlaid with Sycamore inlay & Yew Oysters

